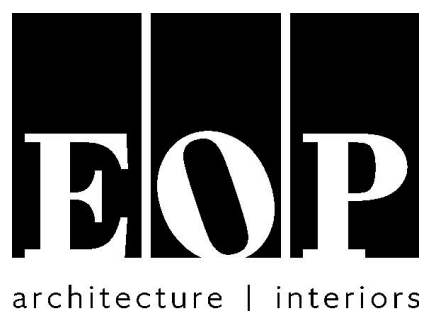


REVISIONS		
#	DATE	DESCRIPTION



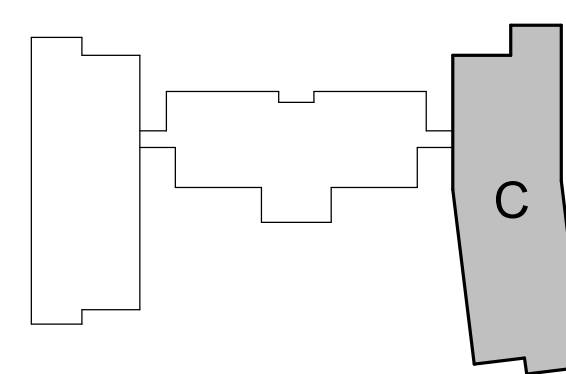
PROJECT TEAM
EOP Architects
Prime Architect
201 W. Short Street, Suite 700
Lexington, KY 40507
p. 859-231-7538 | f. 859-255-4380
www.eopa.com

Brown + Kubican, PSC
Structural Engineer
2224 Young Drive
Lexington, KY 40505
p. 859-543-0933
www.brownkubican.net

CARMAN
Landscape Architect
310 Old Vine Street, Suite 200
Lexington, KY 40507
p. 859.254.9803
www.carmansite.com

Staggs & Fisher
MEP Engineer
3264 Loch Ness Drive,
Lexington, KY 40517
p. 859.271.3246
www.sfenengineering.com

KEYPLAN



All designs, arrangements and plans indicated or represented by this drawing are the property of EOP Architects and were created and developed for use on and in connection with the specified project.

None of this information shall be used by or disclosed to any person or entity for any reason whatsoever without the permission of EOP Architects.

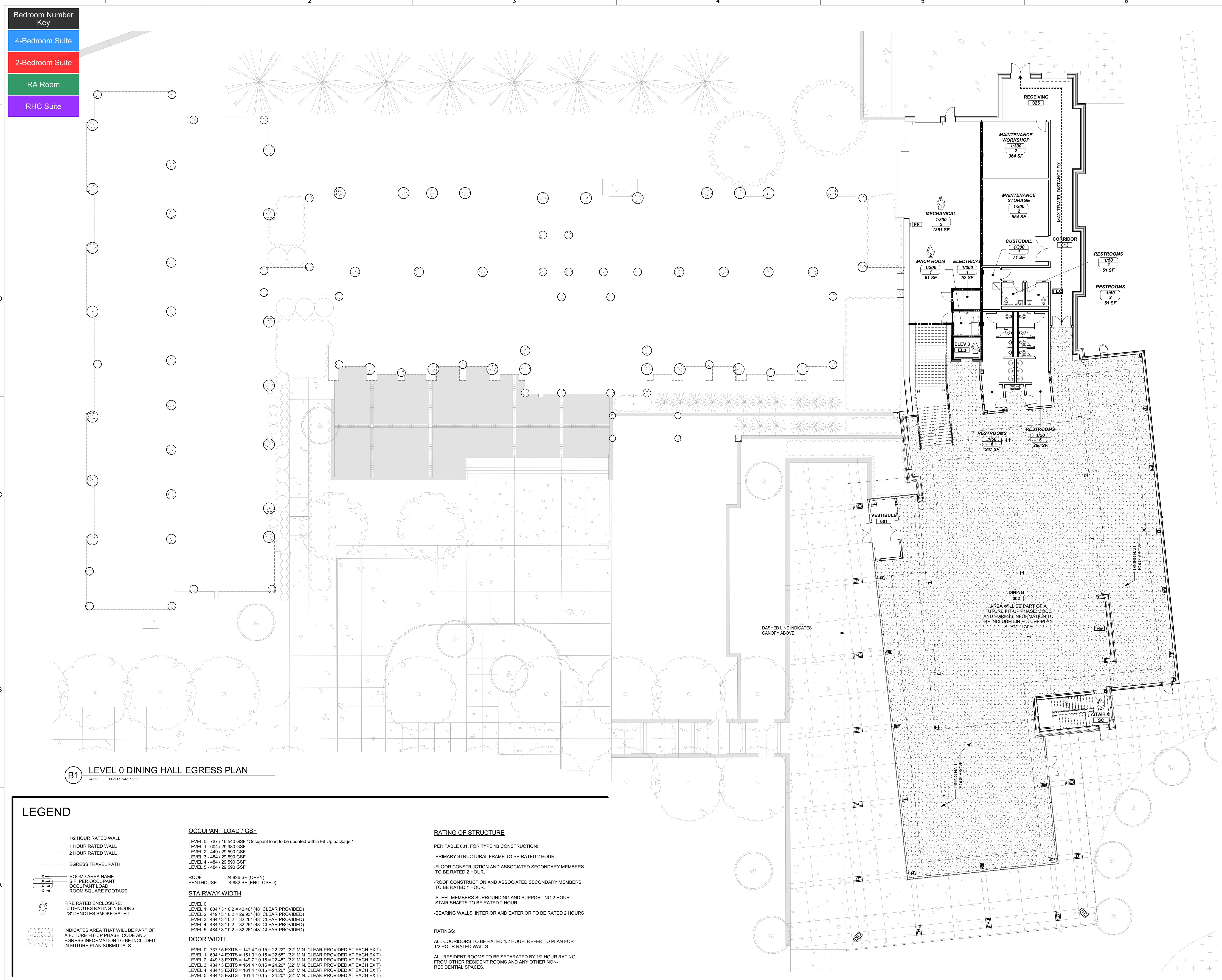
Written dimensions shall have precedence over scale dimensions. Contractor shall verify and be responsible for all dimensions and conditions on the job. Notify EOP Architects immediately of any variation from the dimensions and conditions shown by these drawings.

Job Number 1909
Drawn By KF
Checked By MPS
Date MAY 24, 2021



LEVEL 0 CODE

CODE-0



B1 LEVEL 0 DINING HALL EGRESS PLAN
CODE-0 SCALE: 3/32" = 1'-0"

LEGEND

- 1/2 HOUR RATED WALL
- - - 1 HOUR RATED WALL
- - - 2 HOUR RATED WALL
- EGRESS TRAVEL PATH
- X ROOM / AREA NAME
- X S.F. PER OCCUPANT
- X OCCUPANT LOAD
- X ROOM SQUARE FOOTAGE
- Fire Rated Enclosure:
 - # DENOTES RATING IN HOURS
 - S' DENOTES SMOKE-RATED
- INDICATES AREA THAT WILL BE PART OF A FUTURE FIT-UP PHASE. CODE AND EGRESS INFORMATION TO BE INCLUDED IN FUTURE PLAN SUBMITTALS

OCCUPANT LOAD /GSF

- LEVEL 0 - 737 / 16,540 GSF *Occupant load to be updated within Fit-Up package.*
- LEVEL 1 - 604 / 29,990 GSF
- LEVEL 2 - 449 / 29,590 GSF
- LEVEL 3 - 484 / 29,590 GSF
- LEVEL 4 - 484 / 29,590 GSF
- LEVEL 5 - 484 / 29,590 GSF

STAIRWAY WIDTH

- LEVEL 0
- LEVEL 1: 604 / 3 * 0.2 = 40.46' (48" CLEAR PROVIDED)
- LEVEL 2: 449 / 3 EXITS = 149.7' * 0.15 = 22.45' (32" MIN. CLEAR PROVIDED)
- LEVEL 3: 484 / 3 * 0.2 = 32.26' (48" CLEAR PROVIDED)
- LEVEL 4: 484 / 3 * 0.2 = 32.26' (48" CLEAR PROVIDED)
- LEVEL 5: 484 / 3 * 0.2 = 32.26' (48" CLEAR PROVIDED)

DOOR WIDTH

- LEVEL 0: 737 / 5 EXITS = 147.4 * 0.15 = 22.22' (32" MIN. CLEAR PROVIDED AT EACH EXIT)
- LEVEL 1: 604 / 4 EXITS = 151.0 * 0.15 = 22.65' (32" MIN. CLEAR PROVIDED AT EACH EXIT)
- LEVEL 2: 449 / 3 EXITS = 149.7 * 0.15 = 22.45' (32" MIN. CLEAR PROVIDED AT EACH EXIT)
- LEVEL 3: 484 / 3 EXITS = 161.4 * 0.15 = 24.20' (32" MIN. CLEAR PROVIDED AT EACH EXIT)
- LEVEL 4: 484 / 3 EXITS = 161.4 * 0.15 = 24.20' (32" MIN. CLEAR PROVIDED AT EACH EXIT)
- LEVEL 5: 484 / 3 EXITS = 161.4 * 0.15 = 24.20' (32" MIN. CLEAR PROVIDED AT EACH EXIT)

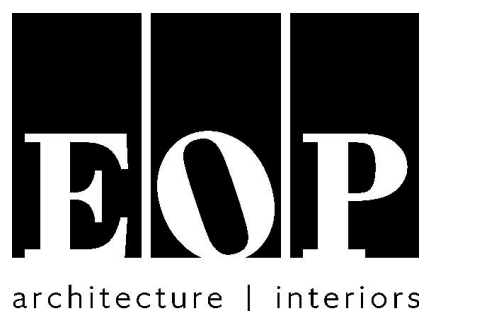
RATING OF STRUCTURE

- PER TABLE 601, FOR TYPE 1B CONSTRUCTION:
- PRIMARY STRUCTURAL FRAME TO BE RATED 2 HOUR.
- FLOOR CONSTRUCTION AND ASSOCIATED SECONDARY MEMBERS TO BE RATED 2 HOUR.
- ROOF CONSTRUCTION AND ASSOCIATED SECONDARY MEMBERS TO BE RATED 1 HOUR.
- STEEL MEMBERS SURROUNDING AND SUPPORTING 2 HOUR STAIR SHAFTS TO BE RATED 2 HOUR.
- BEARING WALLS, INTERIOR AND EXTERIOR TO BE RATED 2 HOURS

RATINGS:

- ALL CORRIDORS TO BE RATED 1/2 HOUR, REFER TO PLAN FOR 1/2 HOUR RATED WALLS.
- ALL RESIDENT ROOMS TO BE SEPARATED BY 1/2 HOUR RATING FROM OTHER RESIDENT ROOMS AND ANY OTHER NON-RESIDENTIAL SPACES.

REVISIONS		
#	DATE	DESCRIPTION



PROJECT TEAM

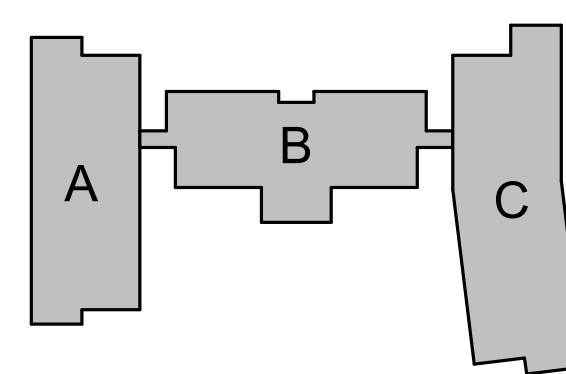
EOP Architects
Prime Architect
201 W. Short Street, Suite 700
Lexington, KY 40507
p. 859-231-7538 | f. 859-255-4380
www.eopa.com

Brown + Kubican, PSC
Structural Engineer
2224 Young Drive
Lexington, KY 40505
p. 859-543-0933
www.brownkubican.net

CARMAN
Landscape Architect
310 Old Vine Street, Suite 200
Lexington, KY 40507
p. 859-254-9803
www.carman-site.com

Staggs & Fisher
MEP Engineer
3264 Loch Ness Drive,
Lexington, KY 40517
p. 859-271-3246
www.sfenegineering.com

KEYPLAN

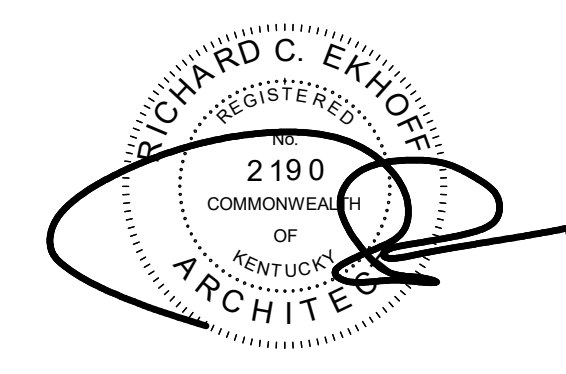


All designs, arrangements and plans indicated or represented by this drawing are the property of EOP Architects and were created and developed for use on and in connection with the specified project.

None of this information shall be used by or disclosed to any person or entity for any reason whatsoever without the permission of EOP Architects.

Written dimensions shall have precedence over scale dimensions. Contractor shall verify and be responsible for all dimensions and conditions on the job. Notify EOP Architects immediately of any variation from the dimensions and conditions shown by these drawings.

Job Number 1909
Drawn By KF
Checked By MPS
Date MAY 24, 2021



LEVEL 1 CODE

CODE-1



B1 LEVEL 1 EGRESS PLAN
CODE-1 SCALE: 3/32" = 1'-0"

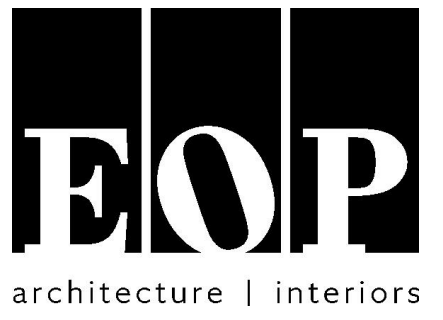
LEGEND

- 1/2 HOUR RATED WALL
 - - - 1 HOUR RATED WALL
 - 2 HOUR RATED WALL
 - EGRESS TRAVEL PATH
 - X ROOM / AREA NAME
 - S.F. PER OCCUPANT
 - OCCUPANT LOAD
 - ROOM SQUARE FOOTAGE
 - FIRE RATED ENCLOSURE:
 - # DENOTES RATING IN HOURS
 - S# DENOTES SMOKE-RATED
 - INDICATES AREA THAT WILL BE PART OF A FUTURE FIT-UP PHASE. CODE AND EGRESS INFORMATION TO BE INCLUDED IN FUTURE PLAN SUBMITTALS
- OCCUPANT LOAD / GSF**
- LEVEL 0 - 737 / 16,540 GSF *Occupant load to be updated within Fit-Up package.*
- LEVEL 1 - 604 / 29,990 GSF
- LEVEL 2 - 449 / 29,590 GSF
- LEVEL 3 - 484 / 29,590 GSF
- LEVEL 4 - 484 / 29,590 GSF
- LEVEL 5 - 484 / 29,590 GSF
- ROOF** = 24,826 SF (OPEN)
- PENTHOUSE** = 4,882 SF (ENCLOSED)
- STAIRWAY WIDTH**
- LEVEL 0: 604 / 3' 0" = 40.46' (48" CLEAR PROVIDED)
- LEVEL 1: 449 / 3' 0" = 29.93' (48" CLEAR PROVIDED)
- LEVEL 2: 484 / 3' 0" = 32.26' (48" CLEAR PROVIDED)
- LEVEL 3: 484 / 3' 0" = 32.26' (48" CLEAR PROVIDED)
- LEVEL 4: 484 / 3' 0" = 32.26' (48" CLEAR PROVIDED)
- LEVEL 5: 484 / 3' 0" = 32.26' (48" CLEAR PROVIDED)
- DOOR WIDTH**
- LEVEL 0: 737 / 5 EXITS = 147.4' 0.15 = 22.22' (32" MIN. CLEAR PROVIDED AT EACH EXIT)
- LEVEL 1: 604 / 4 EXITS = 151.0' 0.15 = 22.65' (32" MIN. CLEAR PROVIDED AT EACH EXIT)
- LEVEL 2: 449 / 3 EXITS = 149.7' 0.15 = 22.45' (32" MIN. CLEAR PROVIDED AT EACH EXIT)
- LEVEL 3: 484 / 3 EXITS = 161.4' 0.15 = 24.20' (32" MIN. CLEAR PROVIDED AT EACH EXIT)
- LEVEL 4: 484 / 3 EXITS = 161.4' 0.15 = 24.20' (32" MIN. CLEAR PROVIDED AT EACH EXIT)
- LEVEL 5: 484 / 3 EXITS = 161.4' 0.15 = 24.20' (32" MIN. CLEAR PROVIDED AT EACH EXIT)

RATING OF STRUCTURE

- PER TABLE 601, FOR TYPE 1B CONSTRUCTION:
- PRIMARY STRUCTURAL FRAME TO BE RATED 2 HOUR.
 - FLOOR CONSTRUCTION AND ASSOCIATED SECONDARY MEMBERS TO BE RATED 2 HOUR.
 - ROOF CONSTRUCTION AND ASSOCIATED SECONDARY MEMBERS TO BE RATED 1 HOUR.
 - STEEL MEMBERS SURROUNDING AND SUPPORTING 2 HOUR STAIR SHAFTS TO BE RATED 2 HOUR.
 - BEARING WALLS, INTERIOR AND EXTERIOR TO BE RATED 2 HOURS
- RATINGS:**
- ALL CORRIDORS TO BE RATED 1/2 HOUR, REFER TO PLAN FOR 1/2 HOUR RATED WALLS.
 - ALL RESIDENT ROOMS TO BE SEPARATED BY 1/2 HOUR RATING FROM OTHER RESIDENT ROOMS AND ANY OTHER NON-RESIDENTIAL SPACES.

REVISIONS		
#	DATE	DESCRIPTION



PROJECT TEAM

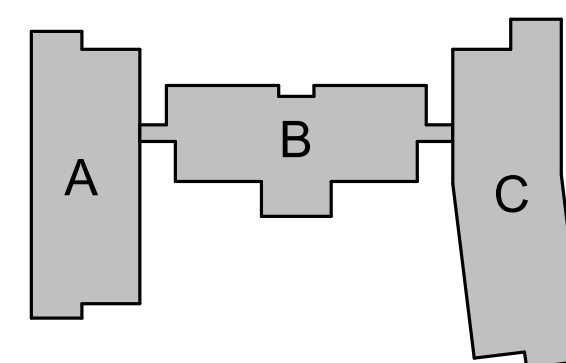
EOP Architects
Prime Architect
201 W. Short Street, Suite 700
Lexington, KY 40507
p. 859-231-7538 | f. 859-255-4380
www.eopa.com

Brown + Kubican, PSC
Structural Engineer
2224 Young Drive
Lexington, KY 40505
p. 859-543-0933
www.brownkubican.net

CARMAN
Landscape Architect
310 Old Vine Street, Suite 200
Lexington, KY 40507
p. 859-254-9803
www.carman-site.com

Staggs & Fisher
MEP Engineer
3254 Loch Ness Drive,
Lexington, KY 40517
p. 859-271-3246
www.sfenengineering.com

KEYPLAN



All designs, arrangements and plans indicated or represented by this drawing are the property of EOP Architects and were created and developed for use on and in connection with the specified project.

None of this information shall be used by or disclosed to any person or entity for any reason whatsoever without the permission of EOP Architects.

Written dimensions shall have precedence over scale dimensions. Contractor shall verify and be responsible for all dimensions and conditions on the job. Notify EOP Architects immediately of any variation from the dimensions and conditions shown by these drawings.

Job Number 1909
Drawn By KF
Checked By MPS
Date MAY 24, 2021



LEVEL 2 CODE

CODE-2

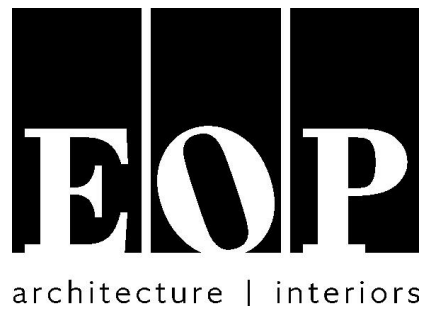


B1 LEVEL 2 EGRESS PLAN
CODE-2 SCALE: 3/32" = 1'-0"

LEGEND

- 1/2 HOUR RATED WALL
 - 1 HOUR RATED WALL
 - 2 HOUR RATED WALL
 - EGRESS TRAVEL PATH
 - ROOM / AREA NAME
 - S.F. PER OCCUPANT
 - OCCUPANT LOAD
 - ROOM SQUARE FOOTAGE
 - FIRE RATED ENCLOSURE:
 - # DENOTES RATING IN HOURS
 - S' DENOTES SMOKE-RATED
 - INDICATES AREA THAT WILL BE PART OF A FUTURE FIT-UP PHASE. CODE AND EGRESS INFORMATION TO BE INCLUDED IN FUTURE PLAN SUBMITTALS
- OCCUPANT LOAD / GSF**
- LEVEL 0 - 737 / 16,540 GSF *Occupant load to be updated within Fit-Up package.*
 LEVEL 1 - 604 / 29,990 GSF
 LEVEL 2 - 449 / 29,590 GSF
 LEVEL 3 - 484 / 29,590 GSF
 LEVEL 4 - 484 / 29,590 GSF
 LEVEL 5 - 484 / 29,590 GSF
- ROOM** = 24,826 SF (OPEN)
PENTHOUSE = 4,882 SF (ENCLOSED)
- STAIRWAY WIDTH**
- LEVEL 0
 LEVEL 1: 604 / 3' 0" = 20.46' (48" CLEAR PROVIDED)
 LEVEL 2: 449 / 3' 0" = 14.97' (48" CLEAR PROVIDED)
 LEVEL 3: 484 / 3' 0" = 16.13' (48" CLEAR PROVIDED)
 LEVEL 4: 484 / 3' 0" = 16.13' (48" CLEAR PROVIDED)
 LEVEL 5: 484 / 3' 0" = 16.13' (48" CLEAR PROVIDED)
- DOOR WIDTH**
- LEVEL 0: 737 / 5 EXITS = 147.4' 0.15 = 22.22' (32" MIN. CLEAR PROVIDED AT EACH EXIT)
 LEVEL 1: 604 / 4 EXITS = 151.0' 0.15 = 22.65' (32" MIN. CLEAR PROVIDED AT EACH EXIT)
 LEVEL 2: 449 / 3 EXITS = 149.7' 0.15 = 22.45' (32" MIN. CLEAR PROVIDED AT EACH EXIT)
 LEVEL 3: 484 / 3 EXITS = 161.4' 0.15 = 24.20' (32" MIN. CLEAR PROVIDED AT EACH EXIT)
 LEVEL 4: 484 / 3 EXITS = 161.4' 0.15 = 24.20' (32" MIN. CLEAR PROVIDED AT EACH EXIT)
 LEVEL 5: 484 / 3 EXITS = 161.4' 0.15 = 24.20' (32" MIN. CLEAR PROVIDED AT EACH EXIT)
- RATING OF STRUCTURE**
- PER TABLE 601, FOR TYPE 1B CONSTRUCTION:
 -PRIMARY STRUCTURAL FRAME TO BE RATED 2 HOUR.
 -FLOOR CONSTRUCTION AND ASSOCIATED SECONDARY MEMBERS TO BE RATED 2 HOUR.
 -ROOF CONSTRUCTION AND ASSOCIATED SECONDARY MEMBERS TO BE RATED 1 HOUR.
 -STEEL MEMBERS SURROUNDING AND SUPPORTING 2 HOUR STAIR SHAFTS TO BE RATED 2 HOUR.
 -BEARING WALLS, INTERIOR AND EXTERIOR TO BE RATED 2 HOURS
- RATINGS:**
- ALL CORRIDORS TO BE RATED 1/2 HOUR, REFER TO PLAN FOR 1/2 HOUR RATED WALLS.
 ALL RESIDENT ROOMS TO BE SEPARATED BY 1/2 HOUR RATING FROM OTHER RESIDENT ROOMS AND ANY OTHER NON-RESIDENTIAL SPACES.

REVISIONS		
#	DATE	DESCRIPTION



PROJECT TEAM

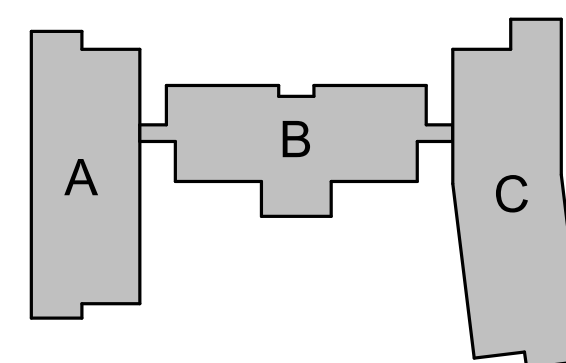
EOP Architects
Prime Architect
201 W. Short Street, Suite 700
Lexington, KY 40507
p. 859-231-7538 | f. 859-255-4380
www.eopa.com

Brown + Kubican, PSC
Structural Engineer
2224 Young Drive
Lexington, KY 40505
p. 859-543-0933
www.brownkubican.net

CARMAN
Landscape Architect
310 Old Vine Street, Suite 200
Lexington, KY 40507
p. 859-254-9803
www.carman.com

Staggs & Fisher
MEP Engineer
3264 Loch Ness Drive,
Lexington, KY 40517
p. 859-271-3246
www.sfenengineering.com

KEYPLAN

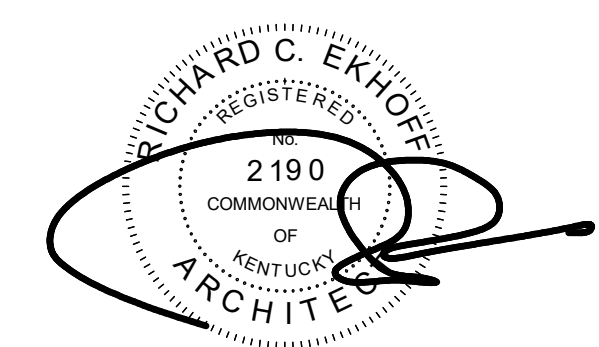


All designs, arrangements and plans indicated or represented by this drawing are the property of EOP Architects and were created and developed for use on and in connection with the specified project.

None of this information shall be used by or disclosed to any person or entity for any reason whatsoever without the permission of EOP Architects.

Written dimensions shall have precedence over scale dimensions. Contractor shall verify and be responsible for all dimensions and conditions on the job. Notify EOP Architects immediately of any variation from the dimensions and conditions shown by these drawings.

Job Number 1909
Drawn By KF
Checked By MPS
Date MAY 24, 2021



LEVEL 3 CODE

CODE-3



B1 LEVEL 3 EGRESS PLAN
CODE-3 SCALE: 3/32" = 1'-0"

LEGEND

- 1/2 HOUR RATED WALL
- - - 1 HOUR RATED WALL
- - - 2 HOUR RATED WALL
- EGRESS TRAVEL PATH
- X ROOM / AREA NAME
- S.F. PER OCCUPANT
- OCCUPANT LOAD
- ROOM SQUARE FOOTAGE
- FIRE RATED ENCLOSURE:
 - # DENOTES RATING IN HOURS
 - S# DENOTES SMOKE-RATED
- INDICATES AREA THAT WILL BE PART OF A FUTURE FIT-UP PHASE. CODE AND EGRESS INFORMATION TO BE INCLUDED IN FUTURE PLAN SUBMITTALS

OCCUPANT LOAD / GSF

LEVEL 0 - 737 / 16,540 GSF *Occupant load to be updated within Fit-Up package.*
 LEVEL 1 - 604 / 29,990 GSF
 LEVEL 2 - 449 / 29,590 GSF
 LEVEL 3 - 484 / 29,590 GSF
 LEVEL 4 - 484 / 29,590 GSF
 LEVEL 5 - 484 / 29,590 GSF

ROOF = 24,826 SF (OPEN)
 PENTHOUSE = 4,882 SF (ENCLOSED)

STAIRWAY WIDTH

LEVEL 0: 604 / 3 * 0.2 = 40.46' (46" CLEAR PROVIDED)
 LEVEL 1: 449 / 3 * 0.2 = 29.93' (46" CLEAR PROVIDED)
 LEVEL 2: 484 / 3 * 0.2 = 32.26' (46" CLEAR PROVIDED)
 LEVEL 3: 484 / 3 * 0.2 = 32.26' (46" CLEAR PROVIDED)
 LEVEL 4: 484 / 3 * 0.2 = 32.26' (46" CLEAR PROVIDED)
 LEVEL 5: 484 / 3 * 0.2 = 32.26' (46" CLEAR PROVIDED)

DOOR WIDTH

LEVEL 0: 737 / 5 EXITS = 147.4 * 0.15 = 22.22' (32" MIN. CLEAR PROVIDED AT EACH EXIT)
 LEVEL 1: 604 / 4 EXITS = 151.0 * 0.15 = 22.65' (32" MIN. CLEAR PROVIDED AT EACH EXIT)
 LEVEL 2: 449 / 3 EXITS = 149.7 * 0.15 = 22.45' (32" MIN. CLEAR PROVIDED AT EACH EXIT)
 LEVEL 3: 484 / 3 EXITS = 161.4 * 0.15 = 24.20' (32" MIN. CLEAR PROVIDED AT EACH EXIT)
 LEVEL 4: 484 / 3 EXITS = 161.4 * 0.15 = 24.20' (32" MIN. CLEAR PROVIDED AT EACH EXIT)
 LEVEL 5: 484 / 3 EXITS = 161.4 * 0.15 = 24.20' (32" MIN. CLEAR PROVIDED AT EACH EXIT)

RATING OF STRUCTURE

- PER TABLE 601, FOR TYPE 1B CONSTRUCTION:
- PRIMARY STRUCTURAL FRAME TO BE RATED 2 HOUR.
- FLOOR CONSTRUCTION AND ASSOCIATED SECONDARY MEMBERS TO BE RATED 2 HOUR.
- ROOF CONSTRUCTION AND ASSOCIATED SECONDARY MEMBERS TO BE RATED 1 HOUR.
- STEEL MEMBERS SURROUNDING AND SUPPORTING 2 HOUR STAIR SHAFTS TO BE RATED 2 HOUR.
- BEARING WALLS, INTERIOR AND EXTERIOR TO BE RATED 2 HOURS

RATINGS:

ALL CORRIDORS TO BE RATED 1/2 HOUR, REFER TO PLAN FOR 1/2 HOUR RATED WALLS.
 ALL RESIDENT ROOMS TO BE SEPARATED BY 1/2 HOUR RATING FROM OTHER RESIDENT ROOMS AND ANY OTHER NON-RESIDENTIAL SPACES.

REVISIONS		
#	DATE	DESCRIPTION



PROJECT TEAM

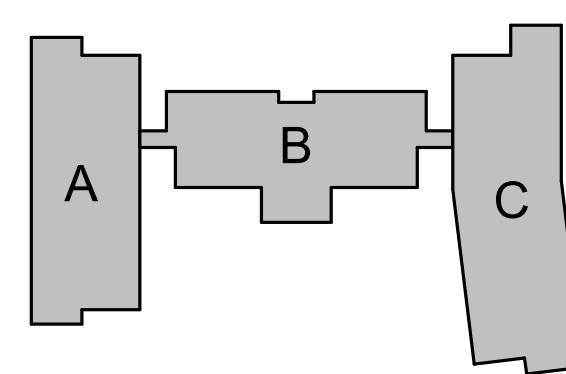
EOP Architects
Prime Architect
201 W. Short Street, Suite 700
Lexington, KY 40507
p. 859-231-7538 | f. 859-255-4380
www.eopa.com

Brown + Kubican, PSC
Structural Engineer
2224 Young Drive
Lexington, KY 40505
p. 859-543-0933
www.brownkubican.net

CARMAN
Landscape Architect
310 Old Vine Street, Suite 200
Lexington, KY 40507
p. 859-254-9803
www.carman-site.com

Staggs & Fisher
MEP Engineer
3264 Loch Ness Drive,
Lexington, KY 40517
p. 859-271-3246
www.sfenengineering.com

KEYPLAN

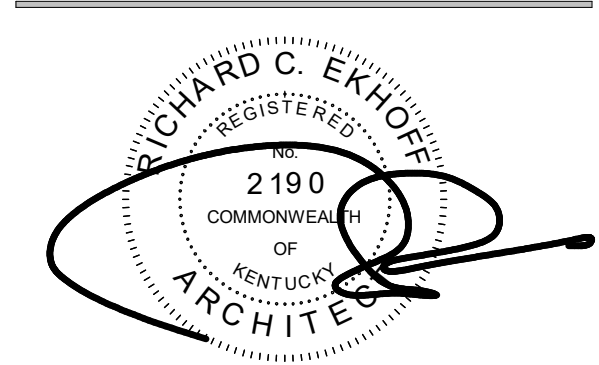


All designs, arrangements and plans indicated or represented by this drawing are the property of EOP Architects and were created and developed for use on and in connection with the specified project.

None of this information shall be used by or disclosed to any person or entity for any reason whatsoever without the permission of EOP Architects.

Written dimensions shall have precedence over scale dimensions. Contractor shall verify and be responsible for all dimensions and conditions on the job. Notify EOP Architects immediately of any variation from the dimensions and conditions shown by these drawings.

Job Number 1909
Drawn By KF
Checked By MPS
Date MAY 24, 2021



LEVEL 5 CODE

CODE-5



B1 LEVEL 5 EGRESS PLAN
CODE-5 SCALE: 3/32" = 1'-0"

LEGEND

- 1/2 HOUR RATED WALL
- 1 HOUR RATED WALL
- 2 HOUR RATED WALL
- EGRESS TRAVEL PATH
- ROOM / AREA NAME
- S.F. PER OCCUPANT
- OCCUPANT LOAD
- ROOM SQUARE FOOTAGE
- FIRE RATED ENCLOSURE
- INDICATES AREA THAT WILL BE PART OF A FUTURE FIT-UP PHASE. CODE AND EGRESS INFORMATION TO BE INCLUDED IN FUTURE PLAN SUBMITTALS

OCCUPANT LOAD / GSF

- LEVEL 0 - 737 / 16,540 GSF *Occupant load to be updated within Fit-Up package.*
- LEVEL 1 - 604 / 29,990 GSF
- LEVEL 2 - 449 / 29,590 GSF
- LEVEL 3 - 484 / 29,590 GSF
- LEVEL 4 - 484 / 29,590 GSF
- LEVEL 5 - 484 / 29,590 GSF
- ROOF = 24,826 SF (OPEN)
- PENTHOUSE = 4,882 SF (ENCLOSED)
- STAIRWAY WIDTH**
- LEVEL 0: 604 / 3' 0" = 20.46' (48" CLEAR PROVIDED)
- LEVEL 1: 449 / 3' 0" = 29.93' (48" CLEAR PROVIDED)
- LEVEL 2: 484 / 3' 0" = 32.26' (48" CLEAR PROVIDED)
- LEVEL 3: 484 / 3' 0" = 32.26' (48" CLEAR PROVIDED)
- LEVEL 4: 484 / 3' 0" = 32.26' (48" CLEAR PROVIDED)
- LEVEL 5: 484 / 3' 0" = 32.26' (48" CLEAR PROVIDED)
- DOOR WIDTH**
- LEVEL 0: 737 / 5 EXITS = 147.4' 0.15 = 22.22' (32" MIN. CLEAR PROVIDED AT EACH EXIT)
- LEVEL 1: 604 / 4 EXITS = 151.0' 0.15 = 22.65' (32" MIN. CLEAR PROVIDED AT EACH EXIT)
- LEVEL 2: 449 / 3 EXITS = 149.7' 0.15 = 22.45' (32" MIN. CLEAR PROVIDED AT EACH EXIT)
- LEVEL 3: 484 / 3 EXITS = 161.4' 0.15 = 24.20' (32" MIN. CLEAR PROVIDED AT EACH EXIT)
- LEVEL 4: 484 / 3 EXITS = 161.4' 0.15 = 24.20' (32" MIN. CLEAR PROVIDED AT EACH EXIT)
- LEVEL 5: 484 / 3 EXITS = 161.4' 0.15 = 24.20' (32" MIN. CLEAR PROVIDED AT EACH EXIT)

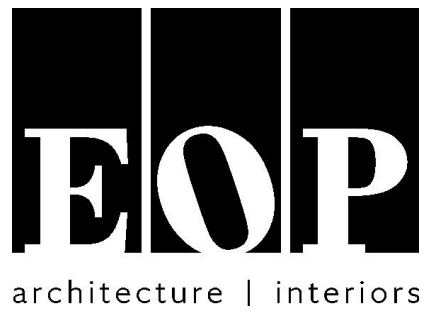
RATING OF STRUCTURE

- PER TABLE 601, FOR TYPE 1B CONSTRUCTION:
- PRIMARY STRUCTURAL FRAME TO BE RATED 2 HOUR.
- FLOOR CONSTRUCTION AND ASSOCIATED SECONDARY MEMBERS TO BE RATED 2 HOUR.
- ROOF CONSTRUCTION AND ASSOCIATED SECONDARY MEMBERS TO BE RATED 1 HOUR.
- STEEL MEMBERS SURROUNDING AND SUPPORTING 2 HOUR STAIR SHAFTS TO BE RATED 2 HOUR.
- BEARING WALLS, INTERIOR AND EXTERIOR TO BE RATED 2 HOURS

RATINGS:

- ALL CORRIDORS TO BE RATED 1/2 HOUR, REFER TO PLAN FOR 1/2 HOUR RATED WALLS.
- ALL RESIDENT ROOMS TO BE SEPARATED BY 1/2 HOUR RATING FROM OTHER RESIDENT ROOMS AND ANY OTHER NON-RESIDENTIAL SPACES.

REVISIONS		
#	DATE	DESCRIPTION



PROJECT TEAM

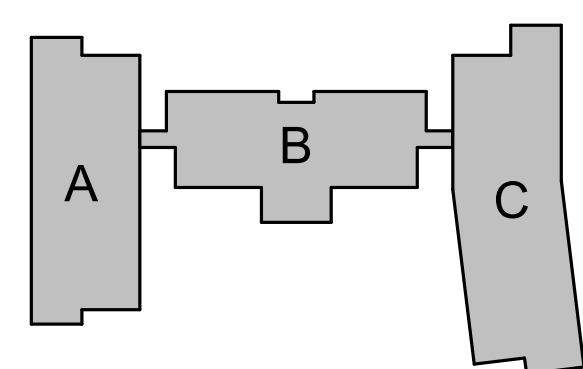
EOP Architects
Prime Architect
201 W. Short Street, Suite 700
Lexington, KY 40507
p. 859-231-7538 | f. 859-255-4380
www.eopa.com

Brown + Kubican, PSC
Structural Engineer
2224 Young Drive
Lexington, KY 40505
p. 859-543-0933
www.brownkubican.net

CARMAN
Landscape Architect
310 Old Vine Street, Suite 200
Lexington, KY 40507
p. 859-254-9803
www.carman-site.com

Staggs & Fisher
MEP Engineer
3264 Loch Ness Drive,
Lexington, KY 40517
p. 859-271-3246
www.sfenengineering.com

KEYPLAN

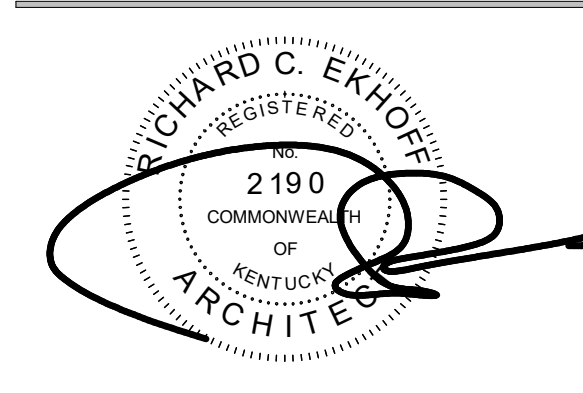


All designs, arrangements and plans indicated or represented by this drawing are the property of EOP Architects and were created and developed for use on and in connection with the specified project.

None of this information shall be used by or disclosed to any person or entity for any reason whatsoever without the permission of EOP Architects.

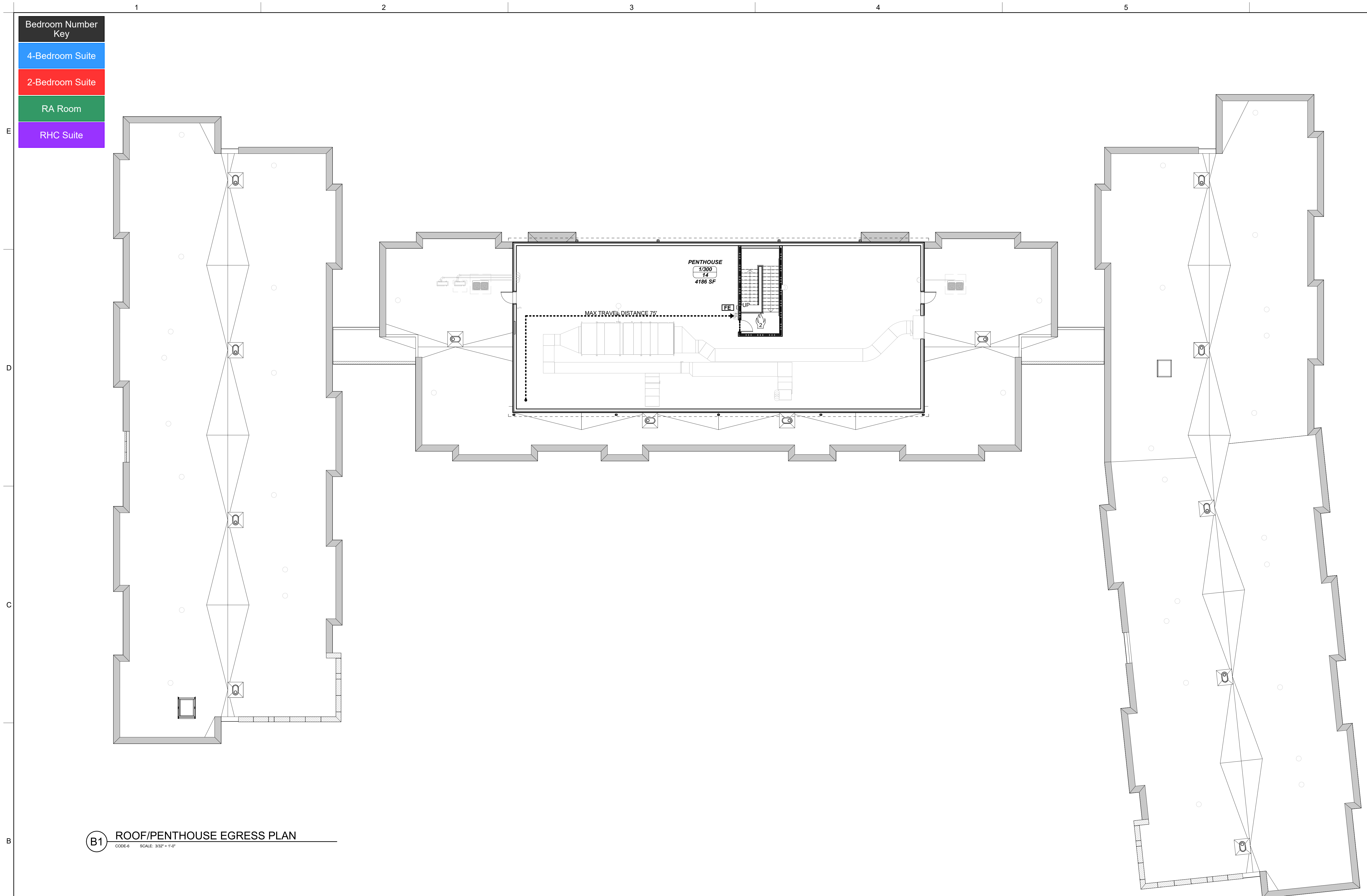
Written dimensions shall have precedence over scale dimensions. Contractor shall verify and be responsible for all dimensions and conditions on the job. Notify EOP Architects immediately of any variation from the dimensions and conditions shown by these drawings.

Job Number 1909
Drawn By KF
Checked By MPS
Date MAY 24, 2021



PENTHOUSE CODE

CODE-6



B1 ROOF/PENTHOUSE EGRESS PLAN
CODE-6 SCALE: 3/32" = 1'-0"

LEGEND

- 1/2 HOUR RATED WALL
- 1 HOUR RATED WALL
- 2 HOUR RATED WALL
- EGRESS TRAVEL PATH

- X ROOM / AREA NAME
- X S.F. PER OCCUPANT
- X OCCUPANT LOAD
- X ROOM SQUARE FOOTAGE

- ⊘ FIRE RATED ENCLOSURE:
- # DENOTES RATING IN HOURS
- S' DENOTES SMOKE-RATED

INDICATES AREA THAT WILL BE PART OF A FUTURE FIT-UP PHASE. CODE AND EGRESS INFORMATION TO BE INCLUDED IN FUTURE PLAN SUBMITTALS

OCCUPANT LOAD / GSF

- LEVEL 0 - 737 / 16,540 GSF *Occupant load to be updated within Fit-Up package.*
- LEVEL 1 - 604 / 29,990 GSF
- LEVEL 2 - 449 / 29,590 GSF
- LEVEL 3 - 484 / 29,590 GSF
- LEVEL 4 - 484 / 29,590 GSF
- LEVEL 5 - 484 / 29,590 GSF

- ROOF = 24,826 SF (OPEN)
- PENTHOUSE = 4,882 SF (ENCLOSED)

STAIRWAY WIDTH

- LEVEL 0
- LEVEL 1: 604 / 3 * 0.2 = 40.46' (48" CLEAR PROVIDED)
- LEVEL 2: 449 / 3 * 0.2 = 29.93' (48" CLEAR PROVIDED)
- LEVEL 3: 484 / 3 * 0.2 = 32.26' (48" CLEAR PROVIDED)
- LEVEL 4: 484 / 3 * 0.2 = 32.26' (48" CLEAR PROVIDED)
- LEVEL 5: 484 / 3 * 0.2 = 32.26' (48" CLEAR PROVIDED)

DOOR WIDTH

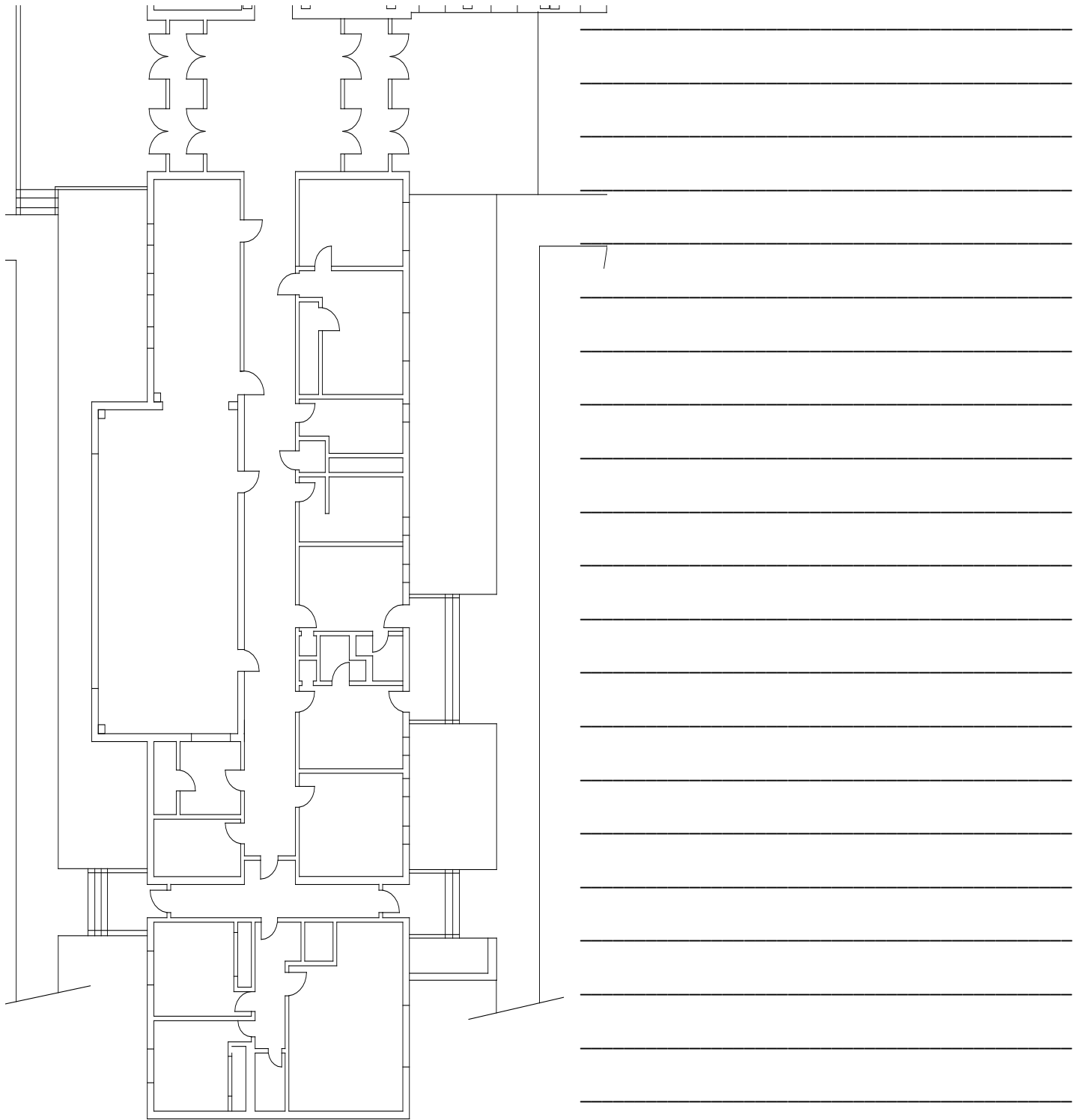
- LEVEL 0: 737 / 5 EXITS = 147.4 * 0.15 = 22.22' (32" MIN. CLEAR PROVIDED AT EACH EXIT)
- LEVEL 1: 604 / 4 EXITS = 151.0 * 0.15 = 22.65' (32" MIN. CLEAR PROVIDED AT EACH EXIT)
- LEVEL 2: 449 / 3 EXITS = 149.7 * 0.15 = 22.45' (32" MIN. CLEAR PROVIDED AT EACH EXIT)
- LEVEL 3: 484 / 3 EXITS = 161.4 * 0.15 = 24.20' (32" MIN. CLEAR PROVIDED AT EACH EXIT)
- LEVEL 4: 484 / 3 EXITS = 161.4 * 0.15 = 24.20' (32" MIN. CLEAR PROVIDED AT EACH EXIT)
- LEVEL 5: 484 / 3 EXITS = 161.4 * 0.15 = 24.20' (32" MIN. CLEAR PROVIDED AT EACH EXIT)

RATING OF STRUCTURE

- PER TABLE 601, FOR TYPE 1B CONSTRUCTION:
- PRIMARY STRUCTURAL FRAME TO BE RATED 2 HOUR.
- FLOOR CONSTRUCTION AND ASSOCIATED SECONDARY MEMBERS TO BE RATED 2 HOUR.
- ROOF CONSTRUCTION AND ASSOCIATED SECONDARY MEMBERS TO BE RATED 1 HOUR.
- STEEL MEMBERS SURROUNDING AND SUPPORTING 2 HOUR STAIR SHAFTS TO BE RATED 2 HOUR.
- BEARING WALLS, INTERIOR AND EXTERIOR TO BE RATED 2 HOURS

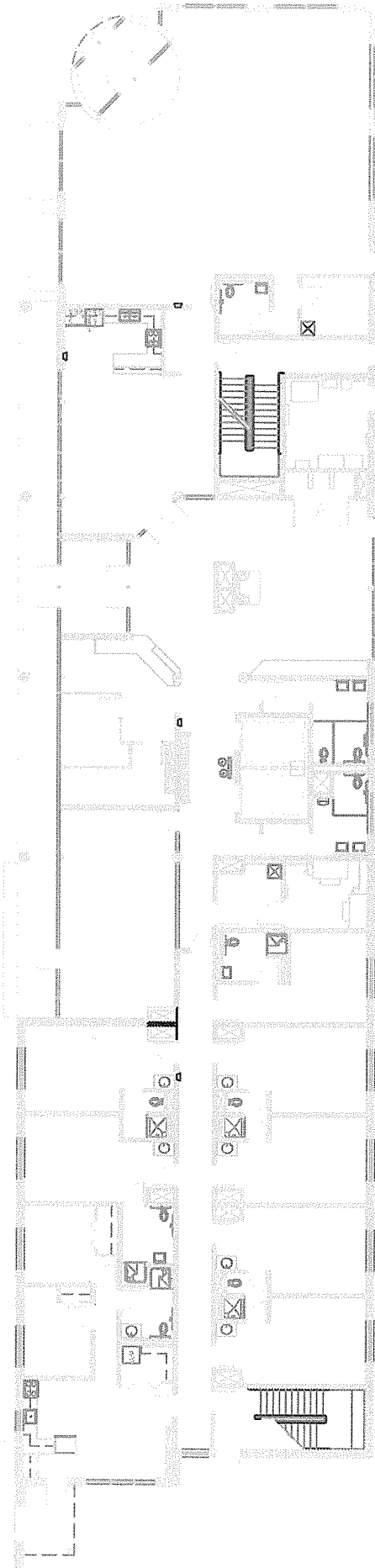
RATINGS:

- ALL COORIDORS TO BE RATED 1/2 HOUR, REFER TO PLAN FOR 1/2 HOUR RATED WALLS.
- ALL RESIDENT ROOMS TO BE SEPARATED BY 1/2 HOUR RATING FROM OTHER RESIDENT ROOMS AND ANY OTHER NON-RESIDENTIAL SPACES.



Halls 1st Floor A Wing

1st Floor



Floors 2-5

